

TCMP CJMP

Medium pressure centrifugal fans
with multi-blade turbine

Construction characteristics

TCMP

- Series with LGAI certification according to European regulation EN 1201-3.
- TCMP series centrifugal fans allow the AIR ASPIRATION at temperatures of up to 400°C/2h and 600°C/1h.
Maximum exterior temperature 70°C.
- 50 Hz three-phase motors, IP-55 protection. Class F insulation. Certified to IEC 34.1 (UNE 20113), VDE 0530 standards.
- Housing and turbine made of rolled steel.
- Corrosion-proof finish in polyester resin, polymerised at 180°C, after degreasing, phosphating and passivation pre-treatment.
- Max. air-flow temperature: 300°C continuous functioning. For continuous operation above 250°C, you should order the fan finished in special high-temperature paint
- On request:
 - Fans with motors for temperatures up to 200°C/2h.
 - Fans with two-speed motor.
 - Belt-driven fans.

300°C
Continuous functioning
(TCMP)



CJMP

- Ventilation box with thermal and acoustic insulation, with LGAI certification in accordance with European norm EN-12101-3.
- Continuous functioning up to 250°C.
- TCMP series centrifugal fan, with LGAI certification according to European standard EN-12101-3.

Technical characteristics

Model	Velocity (r/min)	Max. admissible current (A)			Absorbed power free disc. (W)	Max. airflow (m ³ /h)	Sound level pressure dB(A)		Approx. weight Kg.		
		230V	400V	690V			TCMP	CJMP	TCMP	CJMP	
TCMP-820-4T	CJMP-820-4T	1350	1,32	0,76	0,25	2100	65	59	13,0	27,0	
TCMP-922-4T	CJMP-922-4T	1395	2,51	1,45	0,55	2750	66	60	23,0	58,0	
TCMP-1025-4T-1,5	CJMP-1025-4T-1,5	1410	4,59	2,65	1,10	3400	70	64	33,0	74,0	
TCMP-1025-4T-2	CJMP-1025-4T-2	1420	5,98	3,45	1,50	3900	72	66	36,5	77,5	
TCMP-1128-4T-3	CJMP-1128-4T-3	1420	8,49	4,90	2,20	5000	74	68	43,0	92,0	
TCMP-1128-4T-4	CJMP-1128-4T-4	1420	11,09	6,40	3,00	5500	75	69	45,0	94,0	
TCMP-1128-6T	CJMP-1128-6T	915	3,91	2,26	0,75	3600	60	55	37,0	86,0	
TCMP-1231-4T-3	CJMP-1231-4T-3	1420	8,49	4,90	2,20	4900	73	67	49,5	107,5	
TCMP-1231-4T-4	CJMP-1231-4T-4	1420	11,09	6,40	3,00	5750	75	69	51,5	109,5	
TCMP-1231-4T-5,5	CJMP-1231-4T-5,5	1440	14,38	8,30	4,00	6800	77	71	56,5	114,5	
TCMP-1231-6T	CJMP-1231-6T	925	7,48	4,30	1,50	4500	64	59	51,0	109,0	
TCMP-1435-4T-4	CJMP-1435-4T-4	1420	11,09	6,40	3,00	5700	76	70	62,0	133,0	
TCMP-1435-4T-5,5	CJMP-1435-4T-5,5	1440	14,38	8,30	4,00	7200	78	72	82,0	153,0	
TCMP-1435-4T-7,5	CJMP-1435-4T-7,5	1455		11,40	6,60	8300	80	74	87,0	158,0	
TCMP-1435-4T-10	CJMP-1435-4T-10	1455		15,10	8,70	10700	82	76	98,0	169,0	
TCMP-1435-6T	CJMP-1435-6T	940	9,32	5,36	2,20	7000	68	63	62,0	133,0	
TCMP-1640-4T-5,5	CJMP-1640-4T-5,5	1440	14,38	8,30	4,00	6750	77	71	75,0	145,0	
TCMP-1640-4T-7,5	CJMP-1640-4T-7,5	1455		11,40	6,60	9000	80	74	96,0	166,0	
TCMP-1640-4T-10	CJMP-1640-4T-10	1455		15,10	8,70	10400	82	76	112,0	182,0	
TCMP-1640-6T	CJMP-1640-6T	940	9,32	5,36	2,20	7000	71	66	73,0	143,0	
TCMP-1845-4T-7,5	CJMP-1845-4T-7,5	1455		11,40	6,60	8000	82	76	134,0	215,0	
TCMP-1845-4T-10	CJMP-1845-4T-10	1455		15,10	8,70	7,50	11000	85	79	149,0	230,0
TCMP-1845-6T	CJMP-1845-6T	940	9,32	5,36	2,20	9000	77	72	114,0	195,0	
TCMP-2050-4T-10	CJMP-2050-4T-10	1455		15,10	8,70	9000	83	77	171,0	274,0	
TCMP-2050-4T-12,5	CJMP-2050-4T-12,5	1400		17,80	10,30	9,20	11500	85	79	180,0	283,0
TCMP-2050-4T-15	CJMP-2050-4T-15	1460		21,50	12,40	11,00	14000	87	81	197,0	300,0
TCMP-2050-4T-20	CJMP-2050-4T-20	1460		28,50	16,50	15,00	16500	89	83	215,0	318,0
TCMP-2050-6T	CJMP-2050-6T	950	15,60	8,95	4,00	11000	79	74	162,0	265,0	





TCMP CJMP

Acoustic characteristics

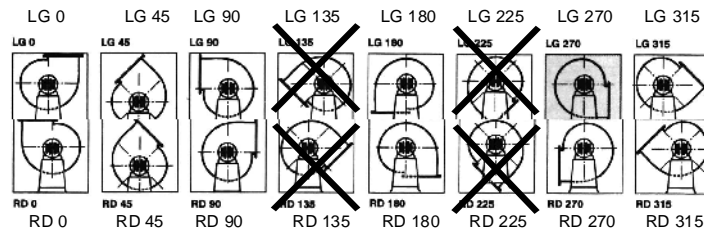
The values shown are calculated using free-field sound pressure levels in dB (A), at a distance equivalent to twice the fan span plus the impeller diameter, with a minimum of 1.5 m.

Sound power spectrum Lw(A) in dB(A) by frequency band in Hz.

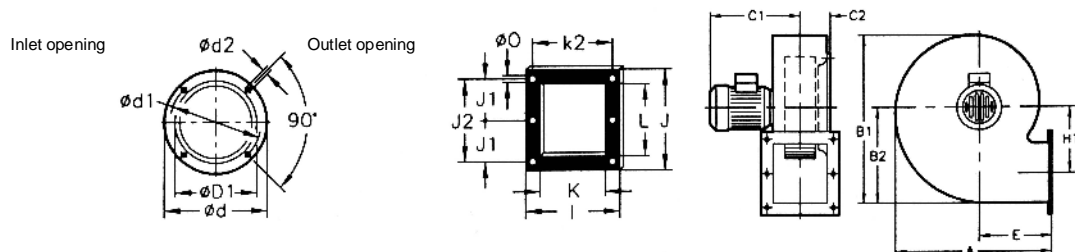
Model	63	125	250	500	1000	2000	4000	8000	Model	63	125	250	500	1000	2000	4000	8000
TCMP									CJMP								
820	40	50	61	68	72	69	67	60	820	34	44	55	62	66	63	61	54
922	41	51	62	69	73	70	68	61	922	35	45	56	63	67	64	62	55
1025-4-1,5	45	55	66	73	77	74	72	65	1025-4-1,5	39	49	60	67	71	68	66	59
1025-4-2	47	57	68	75	79	76	74	67	1025-4-2	41	51	62	69	73	70	68	61
1128-4-3	49	59	70	77	81	78	76	69	1128-4-3	43	53	64	71	75	72	70	63
1128-4-4	50	60	71	78	82	79	77	70	1128-4-4	44	54	65	72	76	73	71	64
1128-6	35	45	56	63	67	64	62	55	1128-6	30	40	51	58	62	59	57	50
1231-4-3	51	60	71	78	82	80	78	71	1231-4-3	45	54	65	72	76	74	72	65
1231-4-4	53	62	73	80	84	82	80	73	1231-4-4	47	56	67	74	78	76	74	67
1231-4-5,5	55	64	75	82	86	84	82	75	1231-4-5,5	49	58	69	76	80	78	76	69
1231-6	42	51	62	69	73	71	69	62	1231-6	37	46	57	64	68	66	64	57
1435-4-4	54	63	74	81	85	83	81	74	1435-4-4	48	57	68	75	79	77	75	68
1435-4-5,5	56	65	76	83	87	85	83	76	1435-4-5,5	50	59	70	77	81	79	77	70
1435-4-7,5	58	67	78	85	89	87	85	78	1435-4-7,5	52	61	72	79	83	81	79	72
1435-4-10	60	69	80	87	91	89	87	80	1435-4-10	54	63	74	81	85	83	81	74
1435-6	46	55	66	73	77	75	73	66	1435-6	41	50	61	68	72	70	68	61
1640-4-5,5	55	64	75	82	86	84	82	75	1640-4-5,5	49	58	69	76	80	78	76	69
1640-4-7,5	58	67	78	85	89	87	85	78	1640-4-7,5	52	61	72	79	83	81	79	72
1640-4-10	60	69	80	87	91	89	87	80	1640-4-10	54	63	74	81	85	83	81	74
1640-6	49	58	69	76	80	78	76	69	1640-6	44	53	64	71	75	73	71	64
1845-4-7,5	61	71	82	89	93	91	89	81	1845-4-7,5	55	65	76	83	87	85	83	75
1845-4-10	64	74	85	92	96	94	92	84	1845-4-10	58	68	79	86	90	88	86	78
1845-6	56	66	77	84	88	86	84	76	1845-6	51	61	72	79	83	81	79	71
2050-4-10	62	72	83	90	94	92	90	82	2050-4-10	56	66	77	84	88	86	84	76
2050-4-12,5	64	74	85	92	96	94	92	84	2050-4-12,5	58	68	79	86	90	88	86	78
2050-4-15	66	76	87	94	98	96	94	86	2050-4-15	60	70	81	88	92	90	88	80
2050-4-20	68	78	89	96	100	98	96	88	2050-4-20	62	72	83	90	94	92	90	82
2050-6	58	68	79	86	90	88	86	78	2050-6	53	63	74	81	85	83	81	73

Orientation

LG 270 standard supply.
 LG 180 and RD 180 position on demand with special fixing measurements.



Dimensions mm



Model	A	B1	B2	C1	C2	ØD1*	ød	ød1	ød2	E	H1	I	J	J1	J2	K	k2	L	ØO
820	322	377	223	272	68,5	200	247	230	M.6	137,5	137	184	213	94,5	189	130	160	156	9

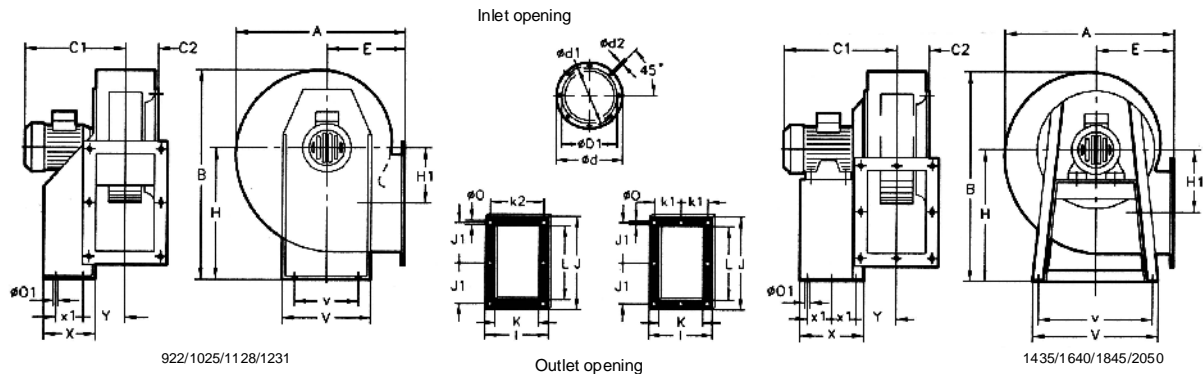
* Recommended nominal tube diameter.





TCMP CJMP

Dimensions mm



Model	A	B	C1	C2	ØD1*	Ød	Ød1	Ød2	E	H	H1	I	J	J1	K	k1	k2	L	Ø0	Ø01	V	V	X	X1	Y
922	388,5	455	332	73,5	224	278	256	M,8	180	280	134	204	282,5	128	140	-	180	215	9,5	10,5	290	220	114	50	105
1025	427	503	393	86	250	305	282	M,8	197	310	144	229	312,5	145	165	-	205	250	9,5	12,5	315	228	134	74	115,5
1128-4T	472	553	430	93,5	280	348	320	M,8	216	340	152	244	364	170	180	-	220	296,5	9,5	12,5	348	245	144	95	122,5
1128-6T	472	553	400	93,5	280	348	320	M,8	216	340	152	244	364	170	180	-	220	296,5	9,5	12,5	348	245	144	95	122,5
1231-3	526	630	440	103,5	315	382	354	M,8	238	390	179,5	264	382,5	180	200	-	240	320	11,5	13	382	322	183	140	126
1231-4	526	630	440	103,5	315	382	354	M,8	238	390	179,5	264	382,5	180	200	-	240	320	11,5	13	382	322	183	140	126
1231-5,5	526	630	463	103,5	315	382	354	M,8	238	390	179,5	264	382,5	180	200	-	240	320	11,5	13	382	322	183	140	126
1231-6T	526	630	440	103,5	315	382	354	M,8	238	390	179,5	264	382,5	180	200	-	240	320	11,5	13	382	322	183	140	126
1435-4	573,5	715	464	118	355	422	394	M,8	250	445	242,5	292	342,5	159	228	133	-	280	11,5	13	456	420	333	136,5	150
1435-5,5	573,5	715	477	118	355	422	394	M,8	250	445	242,5	292	342,5	159	228	133	-	280	11,5	13	456	420	333	136,5	150
1435-7,5	573,5	715	525	118	355	422	394	M,8	250	445	242,5	292	342,5	159	228	133	-	280	11,5	13	456	420	333	136,5	150
1435-10	573,5	715	525	118	355	422	394	M,8	250	445	242,5	292	342,5	159	228	133	-	280	11,5	13	456	420	333	136,5	150
1435-6T	573,5	715	487	118	355	422	394	M,8	250	445	242,5	292	342,5	159	228	133	-	280	11,5	13	456	420	333	136,5	150
1640-5,5	634	799	499	130	400	464	438	M,8	270	495	271	336	404	185	250	150	-	321	11,5	13	500	460	327	133,5	162,5
1640-7,5	634	799	537	130	400	464	438	M,8	270	495	271	336	404	185	250	150	-	321	11,5	13	500	460	327	133,5	162,5
1640-10	634	799	537	130	400	464	438	M,8	270	495	271	336	404	185	250	150	-	321	11,5	13	500	460	327	133,5	162,5
1640-6T	634	799	499	130	400	464	438	M,8	270	495	271	336	404	185	250	150	-	321	11,5	13	500	460	327	133,5	162,5
1845-4T	711	901	554	147	450	515	485	M,8	302	560	305	370	444	202	284	164	-	361	11,5	13	538	502	340	140	179,5
1845-6T	711	901	516	147	450	515	485	M,8	302	560	305	370	444	202	284	164	-	361	11,5	13	538	502	340	140	179,5
2050-10	797	987	572	162,5	500	565	535	M,10	345	610	313	411	544	250	315	182,5	-	451	11,5	13	635	615	435	188	196
2050-12,5	797	987	624	162,5	500	565	535	M,10	345	610	313	411	544	250	315	182,5	-	451	11,5	13	635	615	435	188	196
2050-15	797	987	677	162,5	500	565	535	M,10	345	610	313	411	544	250	315	182,5	-	451	11,5	13	635	615	435	188	196
2050-20	797	987	677	162,5	500	565	535	M,10	345	610	313	411	544	250	315	182,5	-	451	11,5	13	635	615	435	188	196
2050-6T	797	987	572	162,5	500	565	535	M,10	345	610	313	411	544	250	315	182,5	-	451	11,5	13	635	615	435	188	196

* Recommended nominal tube diameter.

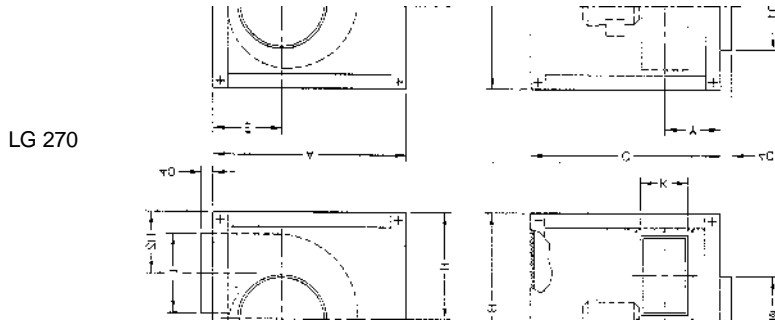




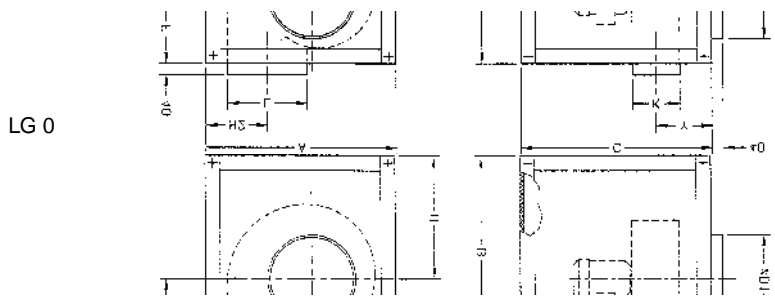
TCMP CJMP

Characteristics Curves

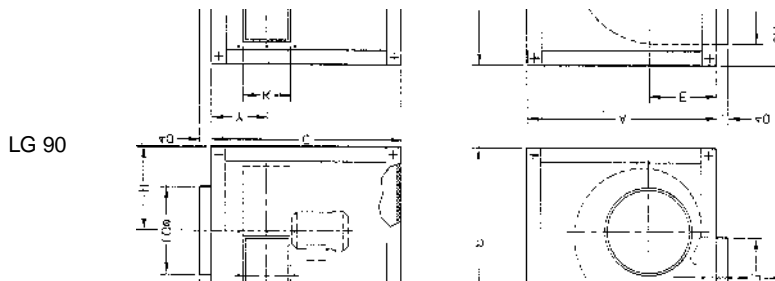
Q = Airflow in m³/h. and m³/s.
 Pe = Static pressure in mm.c.a. and Pa.



Model	A	B	C	ØD1	E	H	H2	K	L	Y
CJMP-820	400	450	450	200	154,5	263	126	130	156	112
CJMP-922	610	610	610	224	187	349	215	140	215	176
CJMP-1025	660	660	660	250	204	379	235	165	250	178,5
CJMP-1128	720	720	720	280	223	409	257	180	295	191
CJMP-1231	800	800	800	315	245	459	279,5	200	320	205
CJMP-1435	880	880	880	355	257	514	271,5	230	280	291
CJMP-1640	970	970	970	400	277	564	293	250	320	324
CJMP-1845	1070	1070	1070	450	309	629	324	284	360	357
CJMP-2000	1160	1160	1160	500	352	679	366	315	450	385,5



Model	A	B	C	ØD1	E	H	H2	K	L	Y
CJMP-922	610	610	610	224	261	349	197	140	215	176
CJMP-1025	660	660	660	250	281	379	214	165	250	178,5
CJMP-1128	720	720	720	280	311	409	233	180	295	191
CJMP-1231	800	800	800	315	341	459	255	200	320	205
CJMP-1435	880	880	880	355	366	514	253	230	280	291
CJMP-1640	970	970	970	400	406	564	287	250	320	324
CJMP-1845	1070	1070	1070	450	441	629	319	284	360	357
CJMP-2050	1160	1160	1160	500	481	679	362	315	450	385,5



Model	A	B	C	ØD1	E	H	H2	K	L	Y
CJMP-922	720	720	720	224	187	349	237	140	215	176
CJMP-1025	800	800	800	250	204	379	277	165	250	178,5
CJMP-1128	880	880	880	280	223	409	319	180	295	191
CJMP-1231	970	970	970	315	245	459	332	200	320	205
CJMP-1435	1070	1070	1070	355	257	514	314	230	280	291
CJMP-1640	1160	1160	1160	400	277	564	325	250	320	324
CJMP-1845	865	1260	1050	450	309	629	326	284	360	357
CJMP-2050	965	1400	1200	500	352	679	408	315	450	383,5

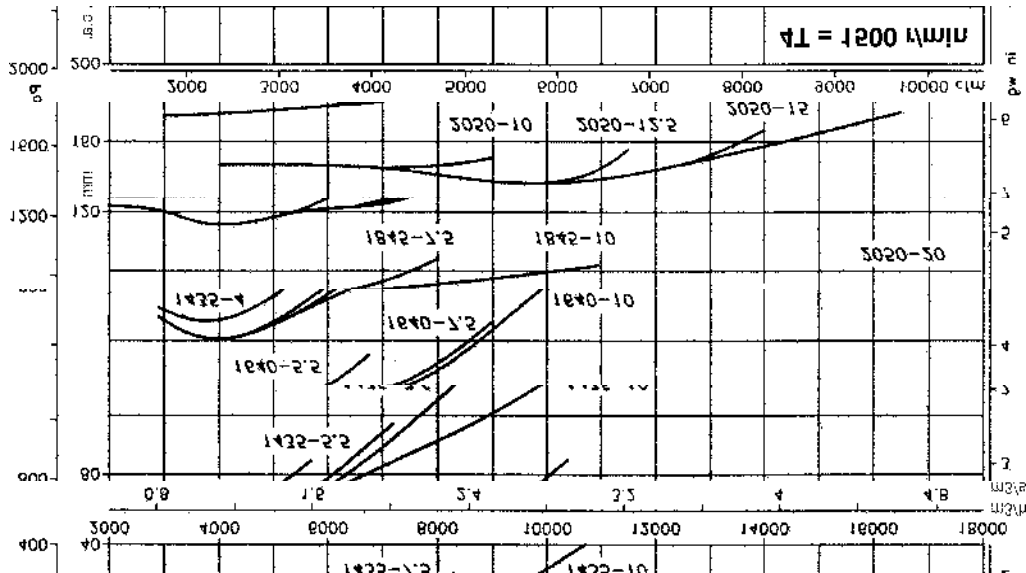
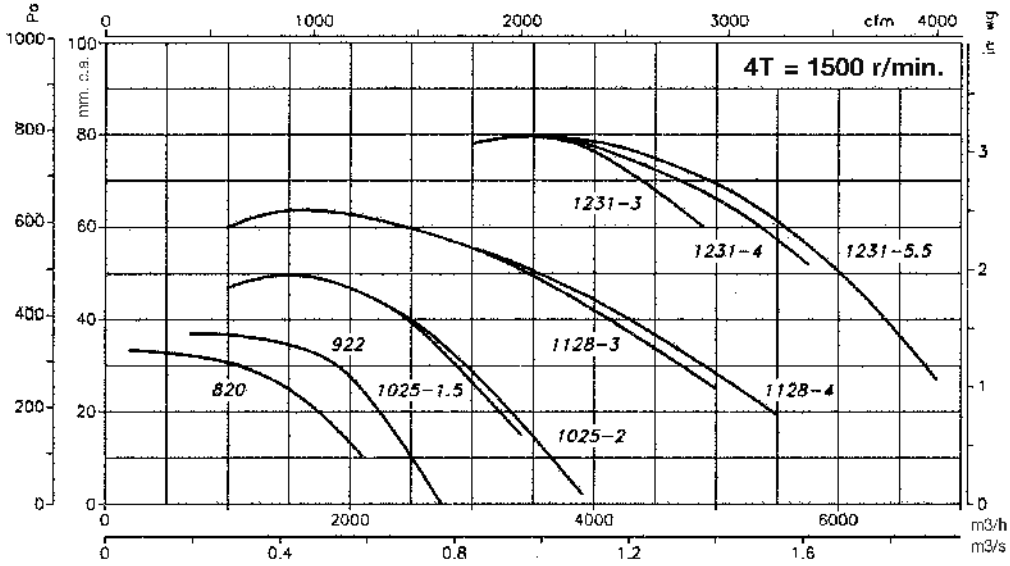




TCMP CJMP

Characteristics Curves

Q = Airflow in m³/h. and m³/s.
 Pe = Static pressure in mm.c.a. and Pa.

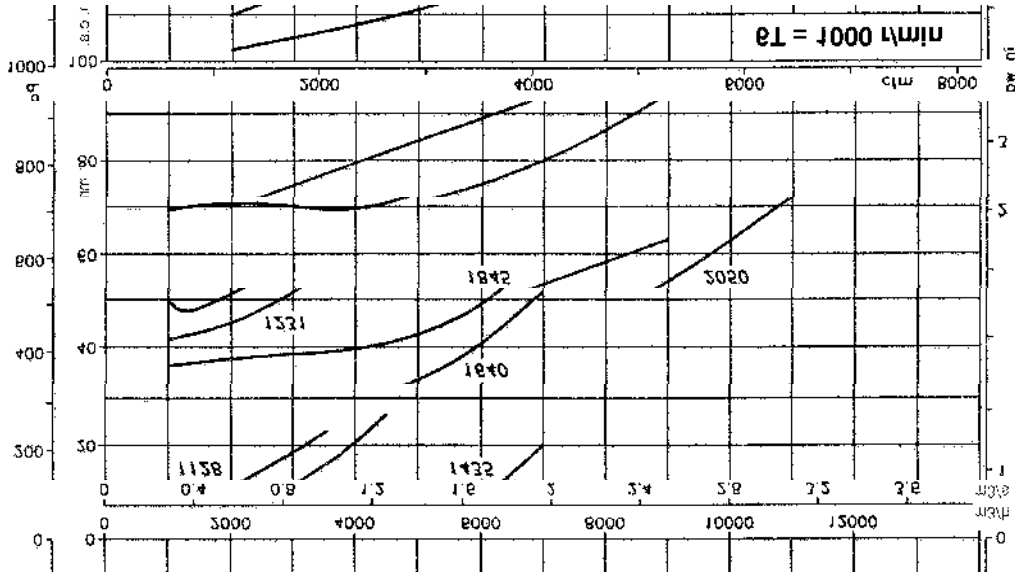




TCMP CJMP

Characteristics Curves

Q = Airflow in m³/h. and m³/s.
 Pe = Static pressure in mm.c.a. and Pa.



Accessories

See pages 248 onwards.

